

Camberwell on the Green

Core C – Fourth floor

Apartment	Internal Area		External Area	
	sq m	sq ft	sq m	sq ft
C406 (2 bed)	81	872	4	43

South Elevation



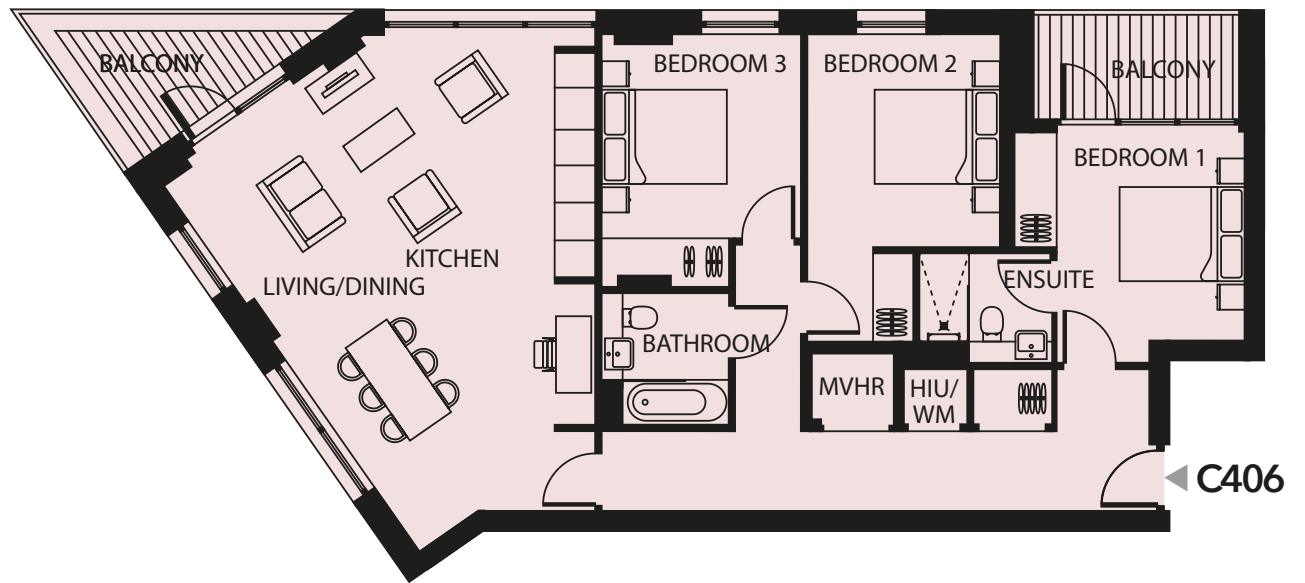
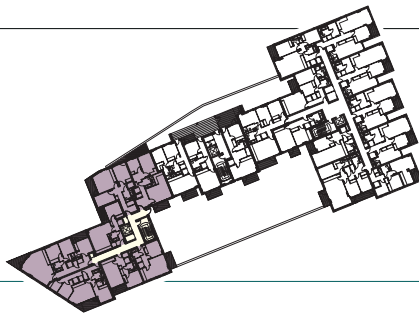
West Elevation A



West Elevation B



Fourth Floor



A DEVELOPMENT BY



www.camberwellonthegreen.co.uk

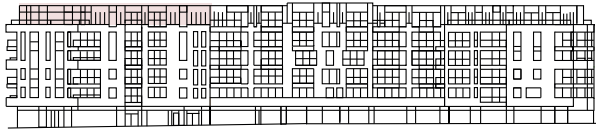
DISCLAIMER The details contained on this spread are intended to give a general impression of the homes referred to therein but do not form part of any specification or contract. The dimensions are approximate and may vary depending on internal finish. Prior to the production of this document, some details may have changed because of the Frasers Property's policy of continually updating and improving design features. Therefore, please be sure to check with the developers or their agents, any aspect that might be of particular importance to you. Frasers Property gives notice that; (1) the particulars are produced in good faith, are set out as a general guide only and do not constitute any part of a contract; (2) no person in the employment of Frasers Property or their agents has any authority to make or give any representation or warranty whatsoever in relation to these properties August 2016.

Camberwell on the Green

Core C – Fifth floor

Apartment	Internal Area		External Area	
	sq m	sq ft	sq m	sq ft
C505 (3 bed)	103	1109	15	161

South Elevation



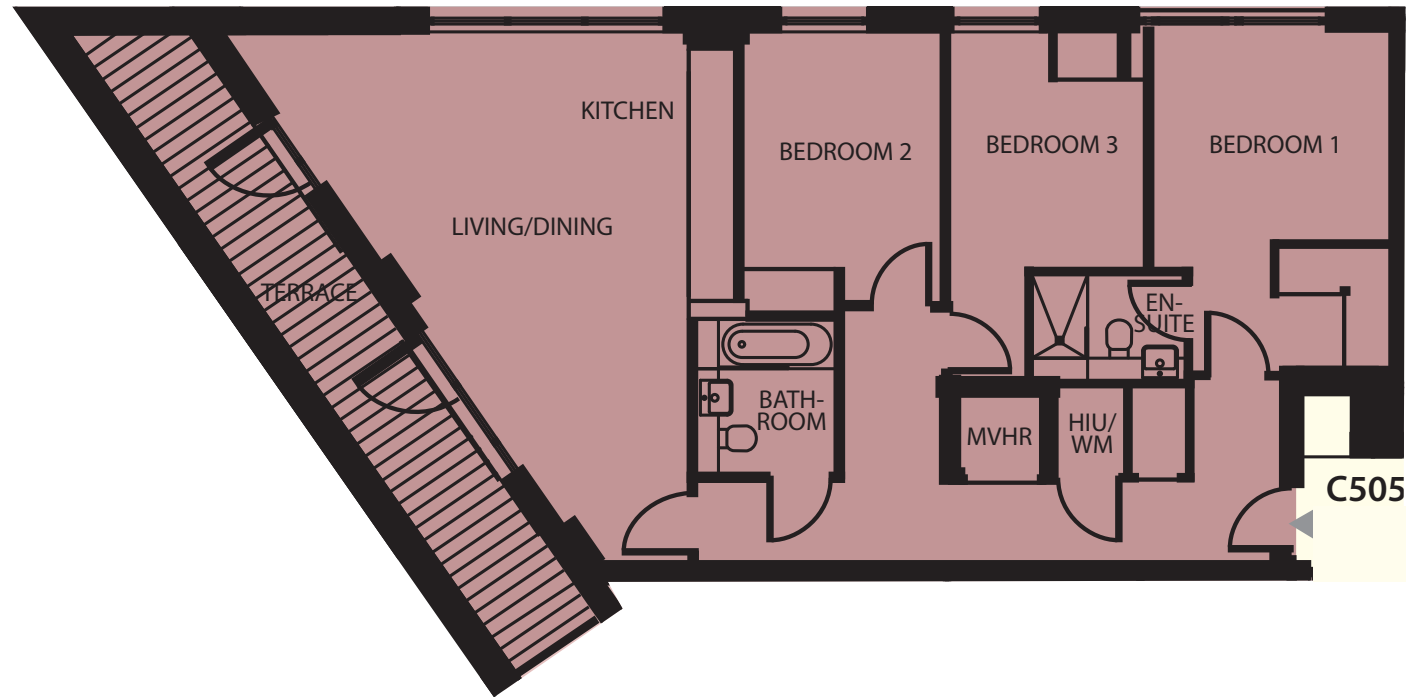
West Elevation A



West Elevation B



Fifth Floor



A DEVELOPMENT BY



www.camberwellonthegreen.co.uk

DISCLAIMER The details contained on this spread are intended to give a general impression of the homes referred to therein but do not form part of any specification or contract. The dimensions are approximate and may vary depending on internal finish. Prior to the production of this document, some details may have changed because of the Frasers Property's policy of continually updating and improving design features. Therefore, please be sure to check with the developers or their agents, any aspect that might be of particular importance to you. Frasers Property gives notice that: (1) the particulars are produced in good faith, are set out as a general guide only and do not constitute any part of a contract; (2) no person in the employment of Frasers Property or their agents has any authority to make or give any representation or warranty whatsoever in relation to these properties August 2016.

Camberwell on the Green

Core A – fifth floor

Apartment	Internal Area		External Area	
	sq m	sq ft	sq m	sq ft
A507 (3 bed)	109	1173	83	893

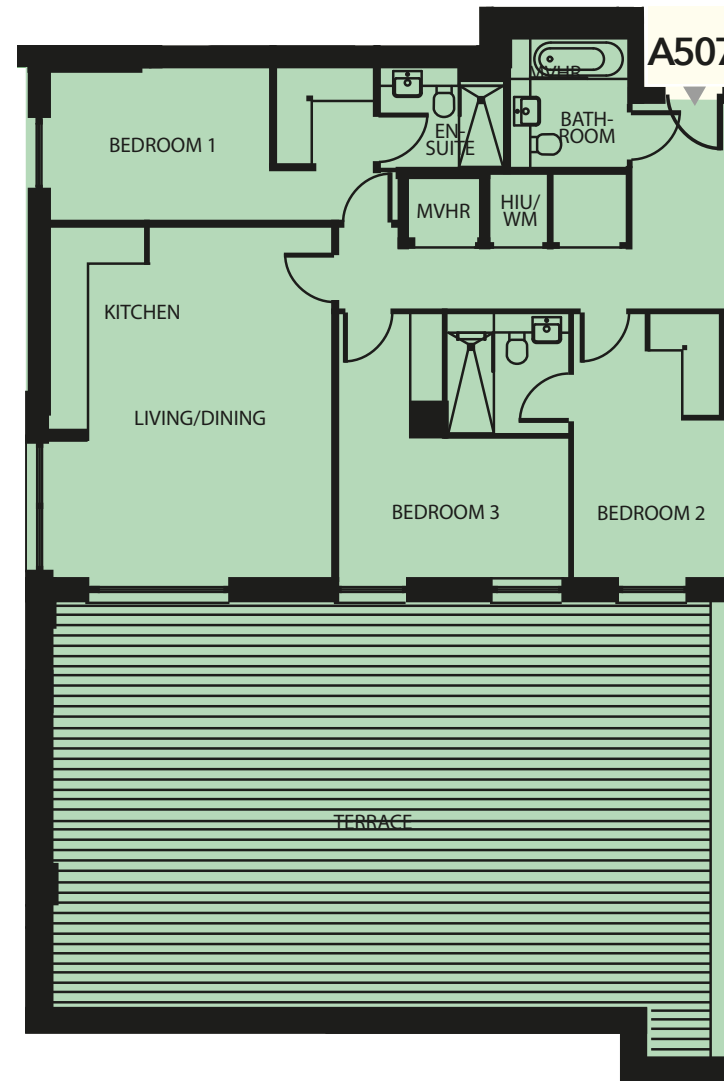
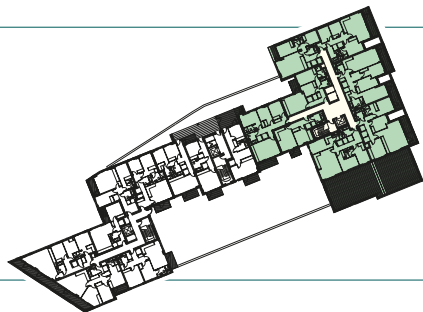
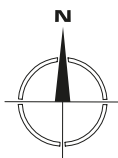
South Elevation



East Elevation



Fifth Floor



A DEVELOPMENT BY



www.camberwellonthegreen.co.uk

DISCLAIMER The details contained on this spread are intended to give a general impression of the homes referred to therein but do not form part of any specification or contract. The dimensions are approximate and may vary depending on internal finish. Prior to the production of this document, some details may have changed because of the Frasers Property's policy of continually updating and improving design features. Therefore, please be sure to check with the developers or their agents, any aspect that might be of particular importance to you. Frasers Property gives notice that: (1) the particulars are produced in good faith, are set out as a general guide only and do not constitute any part of a contract; (2) no person in the employment of Frasers Property or their agents has any authority to make or give any representation or warranty whatsoever in relation to these properties August 2016.